

2nd Floor, City Gate West
Tollhouse Hill
Nottingham
NG1 5AT

Tel: 0115 7841223
Fax: 0115 9583232
e-mail: hello@lungfish-architects.co.uk
Web: www.lungfish-architects.co.uk
© 2024

NOTES

- Do not scale from this drawing.
- All measurements are in millimetres unless stated otherwise.
- This drawing is to be read in conjunction with the contract documentation, specification and all relevant Architectural, Electrical, Mechanical, Landscape and Structural drawings.
- Any discrepancies between documents to be reported to the architectural team for review and clarification, prior to works commencing on site.
- All coordinates and dimensions to be checked and confirmed on site, prior to works commencing.
- Lungfish drawings are provided as design intent. The detail shown is demonstrative of principle; all components, fixings and seals etc are to be provided and installed to the satisfaction of each relevant manufacturer's recommendations to maintain thermal, air and fire resistances where applicable.

The information on this drawing is subject to the final coordination of structure/sub-structure, M&E

HEALTH AND SAFETY RISKS:

We have reviewed health and safety risks associated with works associated with the content of this drawing and we do not believe there residual risks that a competent contractor would be aware of.

Furniture Key

Fixed furniture included in scope of works.

Loose furniture shown for context. Not part of works.

Rev	Description	Date	Drn.	Chk.
P10	Latest GAs for Client Sign-off:	14.10.24	rem	
P09	Initial Stage 5 Issue Capturing VE Items:	12.07.24	var	rem
P08	Stage 4 update	27.10.23	JD	rem
P07	Stage 4 update	13.10.23	JD	rem
P06	Stage 4 Issue	29.09.23	var	rem
P05	Stage 3 sign-off issue	11.08.23	OS	rem

CLIENT

Broxtowe Borough Council
Council Offices, Foster Avenue,
Beeston, Nottingham NG9 1AB

CONTRACTOR

Atkins Realis
City Gate East Tollhouse Hill,
Tollhouse Hill,
Nottingham NG1 5FS

PROJECT

Stapleford Community Pavilion "OP5"
Hickings Lane Recreation Ground
Hickings Ln, Stapleford,
Nottingham NG9 8PJ

TITLE

Ground Floor GA Plan

DRAWN BY: KR/OS **DATE:** 08.06.2023

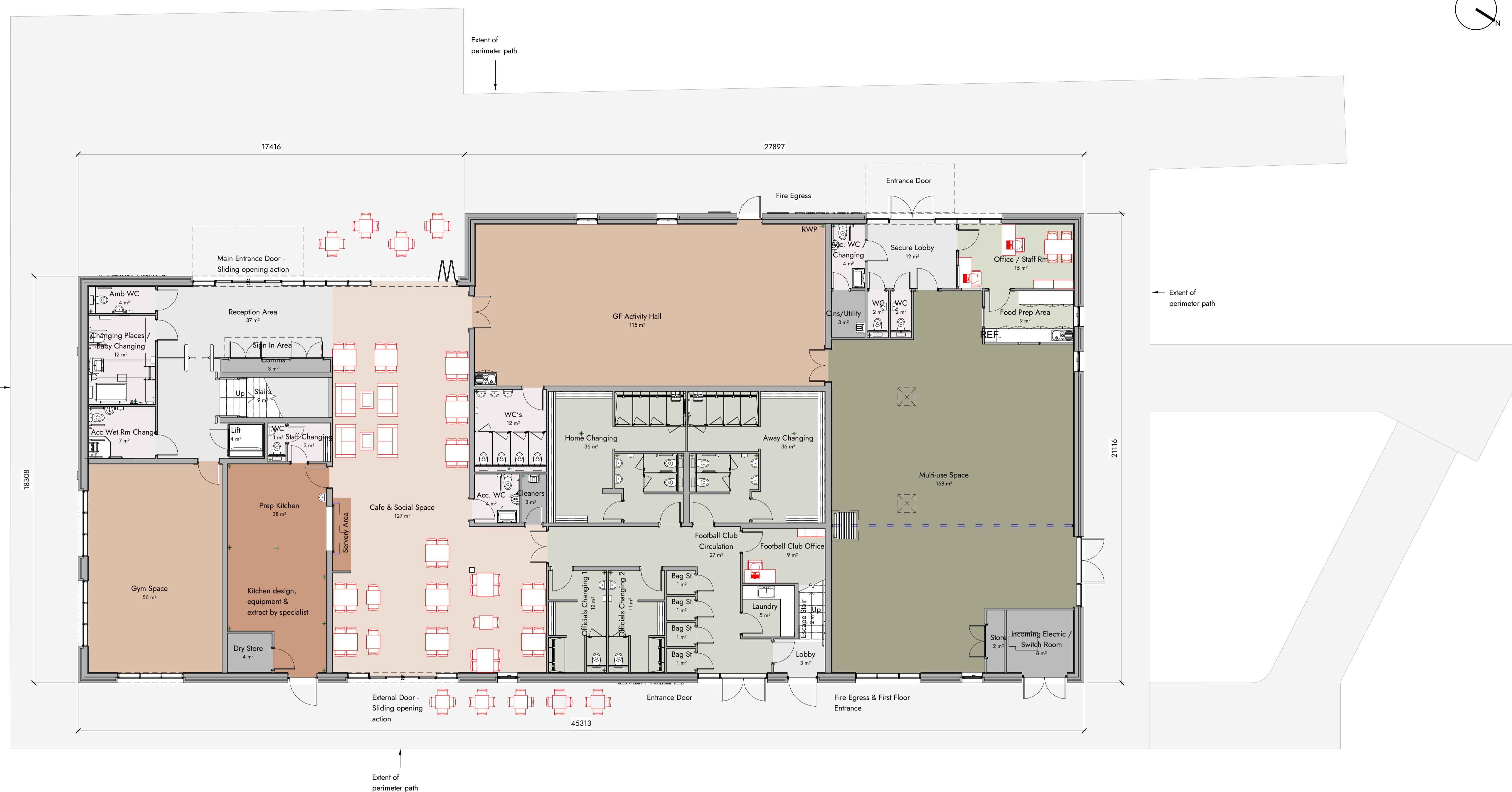
CHECKED BY: REM **SCALE:** As indicated @ A1

STATUS

Work in Progress

PROJ - ORIGIN - ZONE - LEVEL - TYPE - ROLE - NUMBER STATUS REV

SCP - LFA - ZZ - 00 - DR - A - 0200 \$5 P10



Ground Floor Plan
1 : 100

Ground Floor Room Schedule	
Name	Area
Acc Wet Rm Change	7 m ²
Acc. WC	4 m ²
Acc. WC / Changing	4 m ²
Amb WC	4 m ²
Away Changing	36 m ²
Bag St	1 m ²
Bag St	1 m ²
Bag St	1 m ²
Bag St	1 m ²
Bag St	1 m ²
Cafe & Social Space	127 m ²
Changing Places / Baby Changing	12 m ²
Cleaners	3 m ²
Clns/Utility	3 m ²
Comms	3 m ²
Dry Store	4 m ²
Escape Stair	2 m ²
Food Prep Area	9 m ²
Football Club Circulation	27 m ²
Football Club Office	9 m ²
GF Activity Hall	115 m ²
Gym Space	56 m ²
Home Changing	36 m ²
Incoming Electric / Switch Room	8 m ²

Ground Floor Room Schedule	
Name	Area
Laundry	5 m ²
Lift	4 m ²
Lobby	3 m ²
Multi-use Space	158 m ²
Office / Staff Rm	15 m ²
Officials Changing 1	12 m ²
Officials Changing 2	11 m ²
Prep Kitchen	38 m ²
Reception Area	37 m ²
Secure Lobby	12 m ²
Servery Area	3 m ²
Staff Changing	3 m ²
Stairs	9 m ²
Store	2 m ²
WC	1 m ²
WC	2 m ²
WC	2 m ²
WC's	804 m ²

Room Function

- Ancillary
- Cafe/Function Room
- Circulation
- Community Fitness/Sports
- Kitchen/Servery
- Staff
- Stapleford Football Club
- WC/Change
- Youth Services

GIFA Schedule	
Name	Area
GIFA Ground Floor	847 m ²
GIFA First Floor	605 m ²
	1451 m ²

Note: furniture, fixtures and equipment is shown to indicate scale of space and for illustrative purposes only - furniture to be provided by Operator

